



**Childers™**

# SELECTION GUIDE

For Commercial  
& Industrial Projects



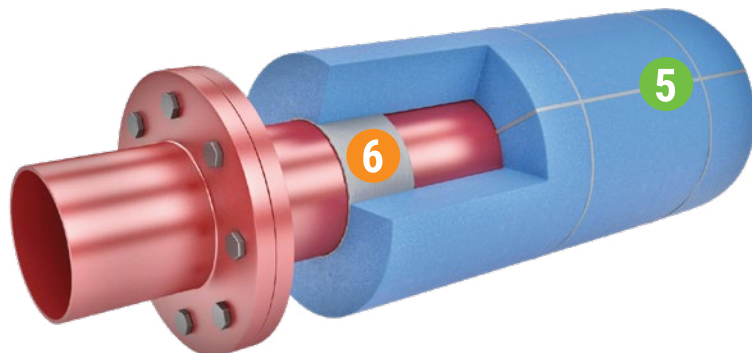
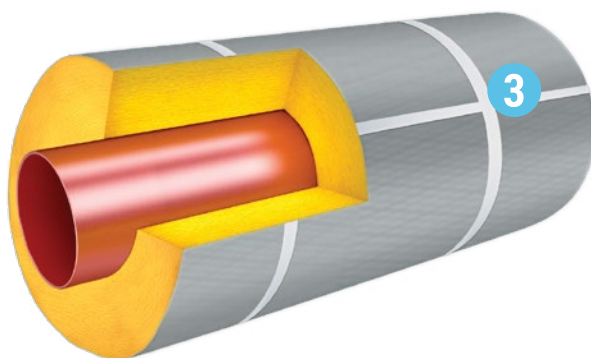
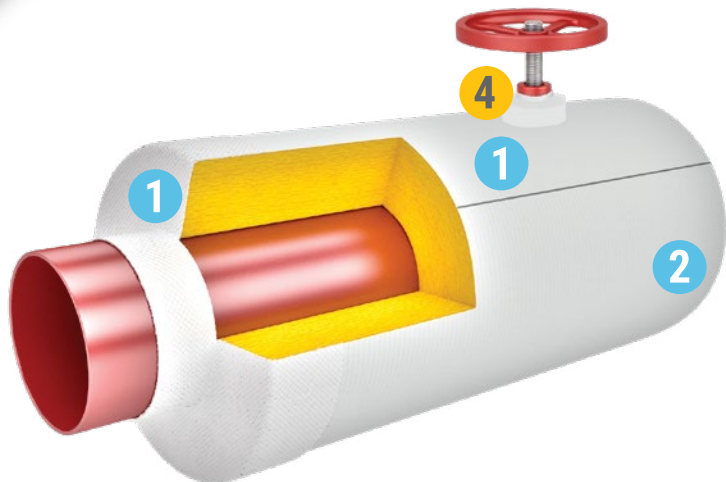
**Childers**<sup>™</sup>

hbf-cp.customerservice@hbfuller.com  
+1 833-849-3700

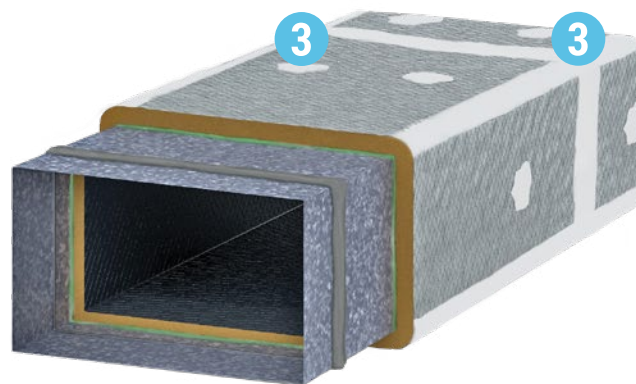
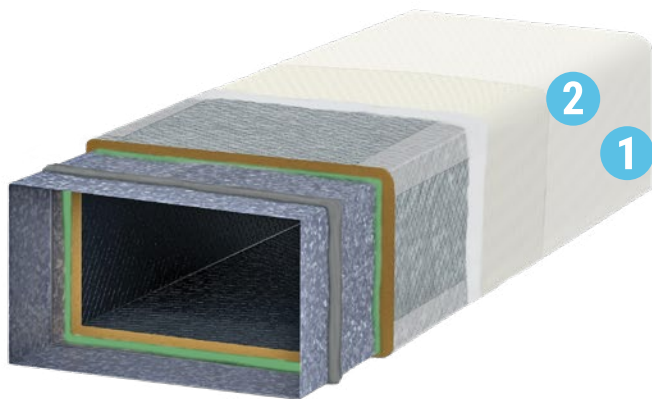
## TABLE OF CONTENTS



Selection Matrix.....	5
Mastics & Coatings.....	6
Membranes.....	8
Adhesives .....	8
Sealants .....	9
Contact & More Information.....	10



- 1 Vapor Seal with Mesh Reinforcement
- 2 Weather Barrier / Lagging Coating with Reinforcing Mesh / Cloth
- 3 Vapor Seal of Jacketing, Seams, Laps, Punctures and Taped Joints
- 4 Flashing Vapor Seal
- 5 Joint Sealant
- 6 Vapor Seal Pipe to Insulation





## APPLICATION

## INSULATION TYPE

### COMMERCIAL MASTICS & COATINGS†

1 2 3	VAPOR SEALING, INSULATION FACING, & JACKETING (FSK, ASJ, FRK)	LAGGING ADHESIVE COATING	FIBERGLASS & MINERAL WOOL	RIGID INSULATION (CELLULAR GLASS, PIR, PHENOLIC)	POLYSTYRENE	RUBBER FOAM / OTHER
CP-9	○	○ <sup>a</sup>	○	○	○*	○
CP-10 / CP-11	○	● <sup>a</sup>	●	●	●*	●
CP-30LO	●	○ <sup>a</sup>	●	●		○
CP-33	●	○ <sup>a</sup>	●	○	○*	○
CP-34	●	○ <sup>a</sup>	●	○	○*	○
CP-35	●	○ <sup>a</sup>	●	○	○*	○
CP-52		● <sup>b</sup>	●	○	○*	○

### INDUSTRIAL MASTICS & COATINGS†

1 2 3	PRIMARY VAPOR RETARDER	WEATHER BARRIER / BREATHER	FIBERGLASS & MINERAL WOOL	RIGID INSULATION (CELLULAR GLASS, PIR, PHENOLIC)	CALCIUM SILICATE	POLYSTYRENE	AEROGEL	RUBBER FOAM / OTHER
CP-10 / CP-11		●	●	●	●	●*	●	○
CP-22 / CP-24	○		○	○				
CP-25		○	○	○	○			
CP-79T / CP-79S	○		○	○				

### MEMBRANES

	REINFORCING FABRIC	FIBERGLASS & MINERAL WOOL	RIGID INSULATION (CELLULAR GLASS, PIR, PHENOLIC)	CALCIUM SILICATE	POLYSTYRENE	AEROGEL	RUBBER FOAM / OTHER
Chil-Glas® #10	●		○	○	○	○	○

### ADHESIVES

	ATTACHMENT	FABRICATION	FIBERGLASS & MINERAL WOOL	RIGID INSULATION (CELLULAR GLASS, PIR, PHENOLIC)	CALCIUM SILICATE	POLYSTYRENE	RUBBER FOAM / OTHER
CP-97	●	●			●		<b>PERLITE</b>

### SEALANTS

4 5 6	JOINT	FLASHING	METAL JACKETING	FIBERGLASS & MINERAL WOOL	RIGID INSULATION (CELLULAR GLASS, PIR, PHENOLIC)	POLYSTYRENE	RUBBER FOAM / OTHER
CP-70 <sup>†</sup>	●	○	○		○	●	
CP-76	○	●	●		●		

This guide is provided as a quick reference. Please see product details in this catalogue, and product data sheet for specific test methods, installation methods and additional information.

a With Mesh Reinforcement

b With Lagging Cloth

\* Always choose white colored coating for exterior use on polystyrene insulation. Do not use solvent based products with polystyrene.

† Vapor seal pipe to insulation with CP-70 to -73°C (-99°F)

‡ Vapor retarder mastics and coatings should only be used as vapor stops / vapor dams in commercial applications and not for cryogenic. Ensure mastic is within service temperature limits.

## Mastics & Coatings

**WATER-BASED**

**CP-9**



**AK-CRYL™**

- LEED v4 Compliant
- Weather Barrier Mastic
- Indoor/outdoor use

**APPLICATION:**  
Full Coverage Protectant

**INSULATIONS:** Fiberglass, MW, Polystyrene, Rubber Foam, PIR

**COLOR:** White

**METHOD:** Brush, Airless Spray

CLASSIFIED UL CERTIFIED GREEN

**WATER-BASED**

**CP-10  
CP-11**



**VI-CRYL®**

- LEED v4 Compliant
- Weather Barrier Mastic
- Indoor/outdoor use

**APPLICATION:** Full Coverage Protectant

**INSULATIONS:** Fiberglass, MW, Polystyrene, Rubber Foam, PIR, Cellular Glass

**COLOR:** CP-10 White, Gray  
CP-11 White, Gray, Black

**METHOD:** Trowel, Brush, Airless Spray

CLASSIFIED UL CERTIFIED GREEN

**ASPHALT-BASED**

**CP-22  
CP-24**



**CHIL-PRUF™**

- Low permeance
- Compatible with buried applications
- Vapor Retarder Mastic
- ASTM C755-19
- Outdoor use

**APPLICATION:** Full Coverage Protectant


**INSULATIONS:** PIR, Cellular Glass, MW, Fiberglass

**COLOR:** Black

**METHOD:** Trowel, Brush, Airless Spray

**ASPHALT EMULSION**

**CP-25**



**CHIL-BRATE™**

- Low VOC
- Economical Weather Barrier Mastic
- Outdoor use

**APPLICATION:**  
Full Coverage Protectant

**INSULATIONS:** PIR, Cellular Glass, MW, Fiberglass, Calcium Silicate

**COLOR:** Black

**METHOD:** Trowel

**SOLVENT-BASED**

**CP-30LO**



**CHIL-PERM®**

- Vapor Sealing
- Full Coverage Protectant
- ASTM C755-19
- Indoor use only

**APPLICATION:** Vapor Sealing, Full Coverage Protectant

**INSULATIONS:** Fiberglass, MW, Rubber Foam

**COLOR:** White

**METHOD:** Brush, Airless Spray

CLASSIFIED UL

**WATER-BASED**

**CP-33**



**CHIL-OUT®**

- LEED v4 Compliant
- ASTM C755-19\*
- Vapor Retarder Closure Mastic
- Enhanced facing color match
- Indoor/outdoor use

**APPLICATION:** Vapor Sealing

**INSULATIONS:** Fiberglass, MW, Polystyrene, Rubber Foam

**COLOR:** White

**METHOD:** Brush, Airless Spray

UL GREENGUARD GOLD GREENGUARD

\* Meets the permeance requirements of ASTM C755-19, Section 7.2.2 for below ambient vapor retarder coatings when used as a closure mastic in conjunction with ASJ and other vapor retarder membranes



WATER-BASED

**CP-34**



**VAPOR RETARDER COATING**

- LEED v4 Compliant
- ASTM C755-19\*
- Vapor Retarder Closure Mastic
- Indoor/outdoor use

**APPLICATION:** Vapor Sealing

**INSULATIONS:** Fiberglass, MW, Polystyrene, Rubber Foam

**COLOR:** White

**METHOD:** Brush, Airless Spray



WATER-BASED

**CP-35**



**CHIL-PERM® WB**

- LEED v4 Compliant
- ASTM C755-19\*
- Vapor Retarder Closure Mastic
- Indoor/outdoor use

**APPLICATION:** Vapor Sealing

**INSULATIONS:** Fiberglass, MW, Polystyrene, Rubber Foam

**COLOR:** White

**METHOD:** Brush, Airless Spray



WATER-BASED

**CP-52**



**CHIL-LAG®**

- LEED v4 Compliant
- Halogen Free
- Indoor use

**APPLICATION:** Lagging

**INSULATIONS:** Fiberglass, MW

**COLOR:** White

**METHOD:** Brush, Airless Spray, Dip



ASPHALT-BASED

**CP-79T**  
**CP-79S**

**CHIL-LASTIC™**

- High temperature sealant / coating
- Used in refractory applications

**APPLICATION:**

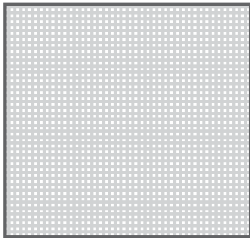
Full Coverage Protectant

**INSULATIONS:** PIR, Cellular Glass, MW, Fiberglass

**COLOR:** Black

**METHOD:** Trowel, Industrial Airless Spray

## Membranes



**OPEN WEAVE  
GLASS FIBER**

**CHIL-GLAS®  
#10**

### REINFORCING MEMBRANE

- High-Strength, Open Weave
- 1.9 oz. / square yard
- 10 x 10 strands / in<sup>2</sup>
- Provides reinforcement and thickness control to coating

**APPLICATION:** Reinforcing Fabric

**COLOR:** White

**DIMENSIONS:** 39" x 150' per roll

## Adhesives



**WATER-BASED**

**CP-97**

### FIBROUS ADHESIVE

- Inorganic, sodium silicate
- Incombustible
- For applications up to 850°F (454°C)

**APPLICATION:**

Attachment, Fabrication

**INSULATIONS:** Calcium Silicate, Perlite

**COLOR:** White

**METHOD:** Brush, Trowel

# Sealants



OIL-BASED

**CP-70**



## CHIL-JOINT® SEALANT

- High solids: ~95%
- Low vapor permeance in sealed joints
- Compatible with polystyrene insulation
- Vapor seal between pipe and insulation to -73°C

**APPLICATION:** Joint, Flashing, Metal Jacketing

**INSULATIONS:** Polystyrene, Cellular Glass, PIR/PUR/Phenolic, Aerogel

**COLOR:** Gray

**METHOD:** Trowel, Cartridge Gun



SOLVENT-BASED

**CP-76**

## CHIL-BYL® SEALANT

- Butyl rubber based
- Low vapor permeance
- Apply in laps of jacketing and as a flashing to seal against water and water vapor intrusion
- -73°C to 149°C

**APPLICATION:** Joint, Flashing, Metal Jacketing

**INSULATIONS:** Cellular Glass, PIR/PUR/Phenolic, Aerogel

**COLOR:** White

**METHOD:** Trowel, Cartridge Gun

# Childers™

Childers™ Products manufactures high-quality, proven mastics, coatings, adhesives and sealants for the Thermal Insulation and HVAC industries.

Whether you need Weather Barrier Coatings for above ambient temperatures, Vapor Barriers for below ambient temperatures or Adhesives and Sealants for Thermal Insulation; choose Childers™. You've got one chance – get it right!



### Documents

- Specs
- Technical Documents
- Safety Documents
- Product Brochures
- LEED® v4 Reference Guide & More!



### Customer Service



### Technical Support

Monday - Friday: 7am - 6pm CST  
Phone: 1-833-849-3700  
hbf-cp.customerservice@hbfuller.com



CONDENSER WATER

HEATING WATER

HEATING WATER

DOMESTIC HOT WATER

DOMESTIC HOT WATER

HEATING WATER

HEATING WATER

DOMESTIC HOT WATER

A photograph of a complex industrial cold water piping system, overlaid with a semi-transparent green filter. The system consists of numerous white PVC pipes, elbows, tees, and valves. Several vertical pipes are wrapped in white insulation with green and white striped bands. Labels on the pipes read 'INDUSTRIAL COLD WATER'. There are also pressure gauges and a blue-handled valve visible. The background is a plain wall.

# Childers™

[fosterproducts.com/childers-products](https://fosterproducts.com/childers-products)

[hbf-cp.customerservice@hbfuller.com](mailto:hbf-cp.customerservice@hbfuller.com)

+1 833-849-3700 | [hbfuller.com](https://hbfuller.com)

3001-R0426